



**US Army**  
**Corps of Engineers**  
St. Louis District



Gateway to Excellence

# **IOWA Army Ammunition Plant RESTORATION ADVISORY BOARD**

## ***FUSRAP Update***

**16 October 2007**



US Army  
Corps of Engineers  
St. Louis District

# FUSRAP Progress Report



Gateway to Excellence

- **Remedial Investigation Report**
  - **RI WP update issued to regulators SEP07**
  - **Report completion scheduled for DEC07**
  - **Due to complexity, line 1 broken into 12 exposure units; no rad present**
  - **WBPS contaminated; multiple COCs; no rad**
  - **Yards C, G, L and Warehouse 3-01 pass chem screen; no rad present**
  - **FS12 DU contaminated; MC in chunks**



US Army  
Corps of Engineers  
St. Louis District

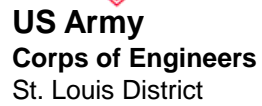
# FUSRAP Progress Report



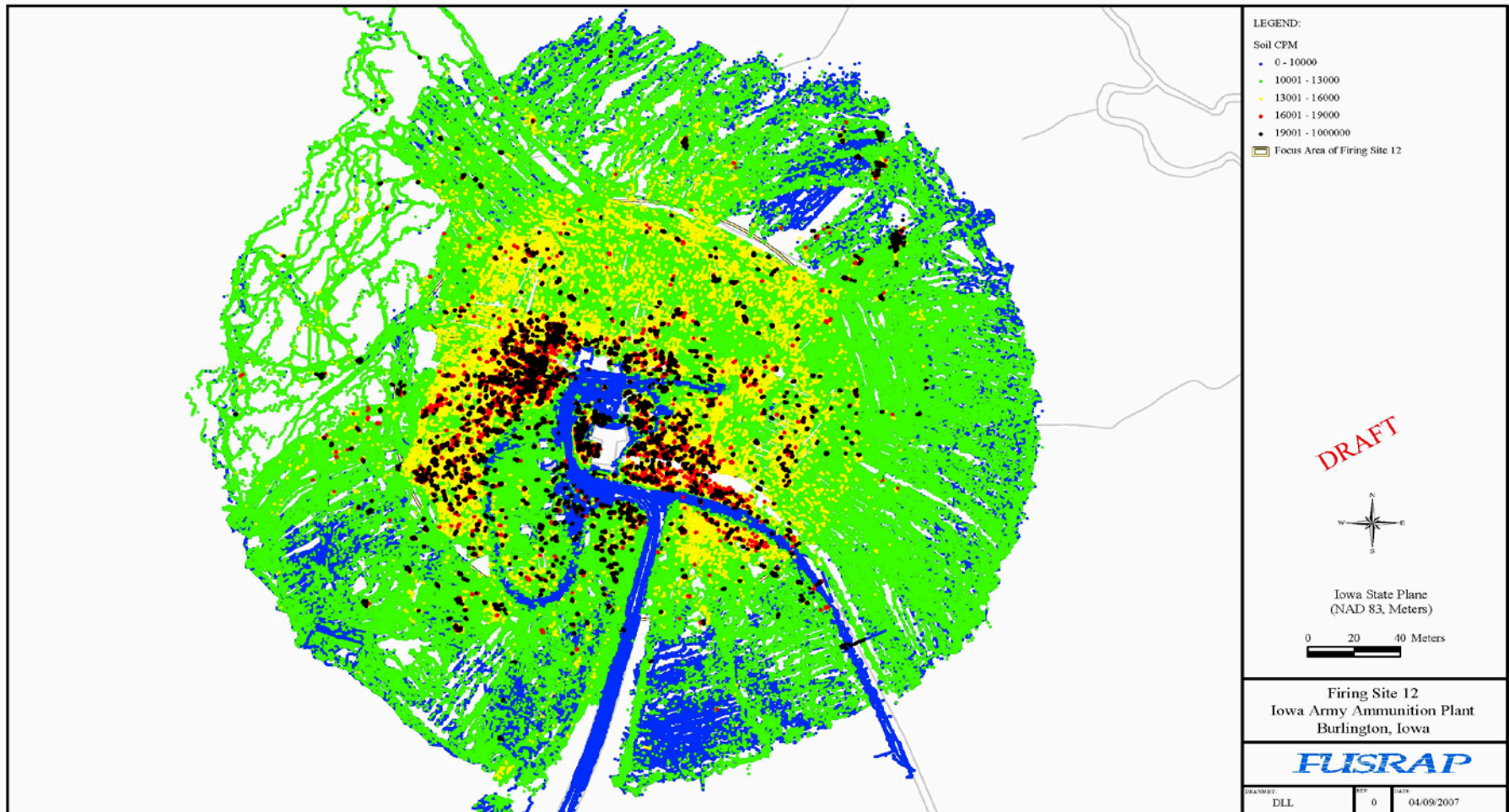
Gateway to Excellence

## Remedial Investigation Preliminary Findings

- Yard L – Sampling complete, no further action planned
- Yard G – Sampling complete, no further action planned
- Yard C – Sampling complete, no further action planned
- Warehouse 301 - Survey complete, no further action planned
- Yard E - Sampling complete, no further action planned
- Area West of Line 5b - Sampling complete, no further action planned
- Line 1 – Metals, PCBs, SVOC and Explosive further investigation required.
- WBPS – Metals and explosives further investigation required.
- Firing Site 1 & 2 – Radiological contamination identified adjacent to the road, further investigation required.
- Firing Site 3, 4, & 5 – Radiological contamination identified adjacent to the loading dock at FS 5, further investigation required.
- Firing Site 6, 7, & 8 – Radiological and explosive contamination identified, further investigation required.
- Firing Site 12 – Radiological contamination identified, further investigation required.



## Gateway to Excellence



IAAAP Firing Site 12 Gamma Walkover Survey

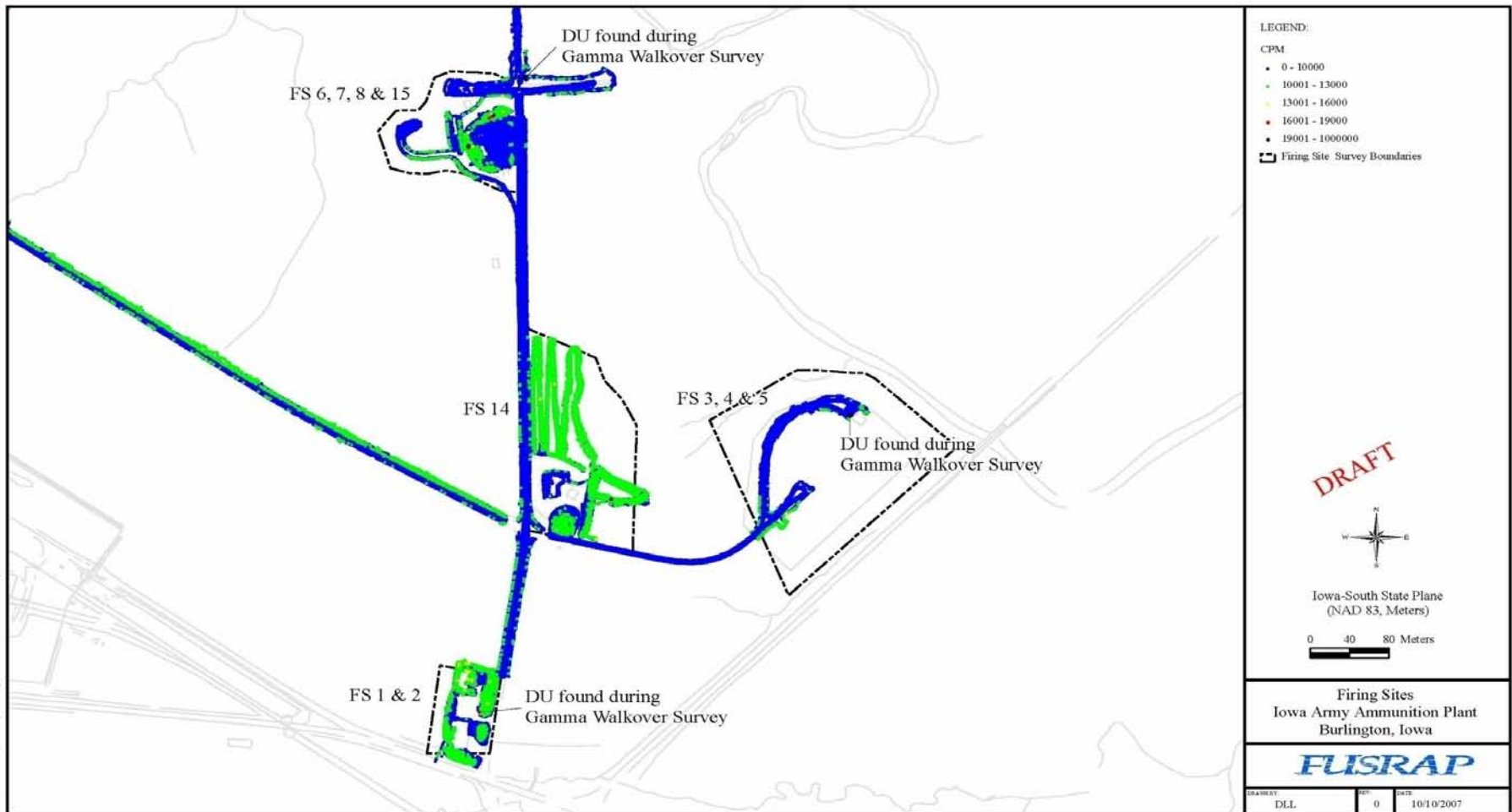


US Army  
Corps of Engineers  
St. Louis District

# Isolated DU Locations at Firing Sites



Gateway to Excellence



IAAAP Firing Sites 1-6 Gamma Walkover Survey



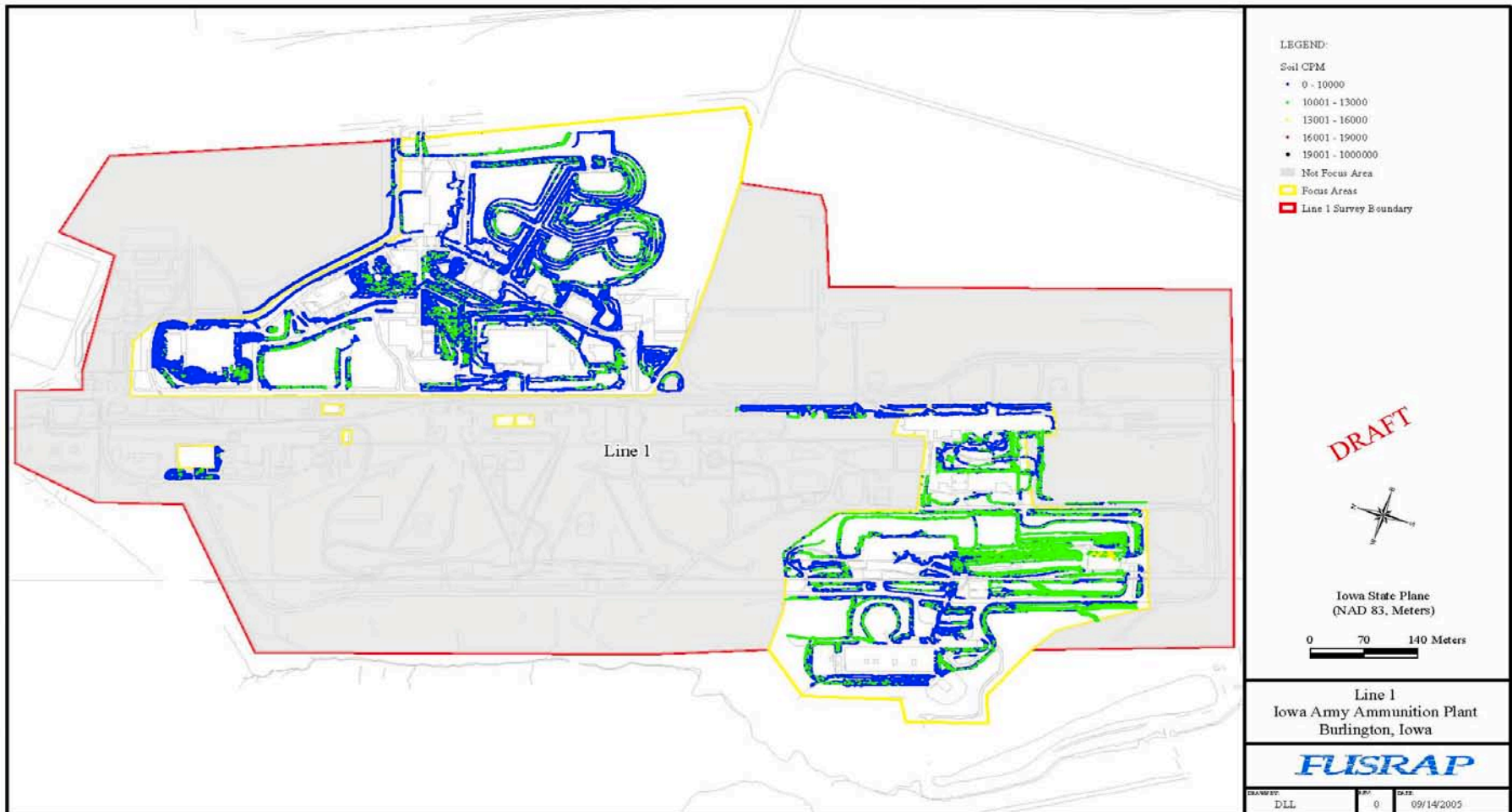


US Army  
Corps of Engineers  
St. Louis District

# Line 1 Gamma Walkover Survey



Gateway to Excellence



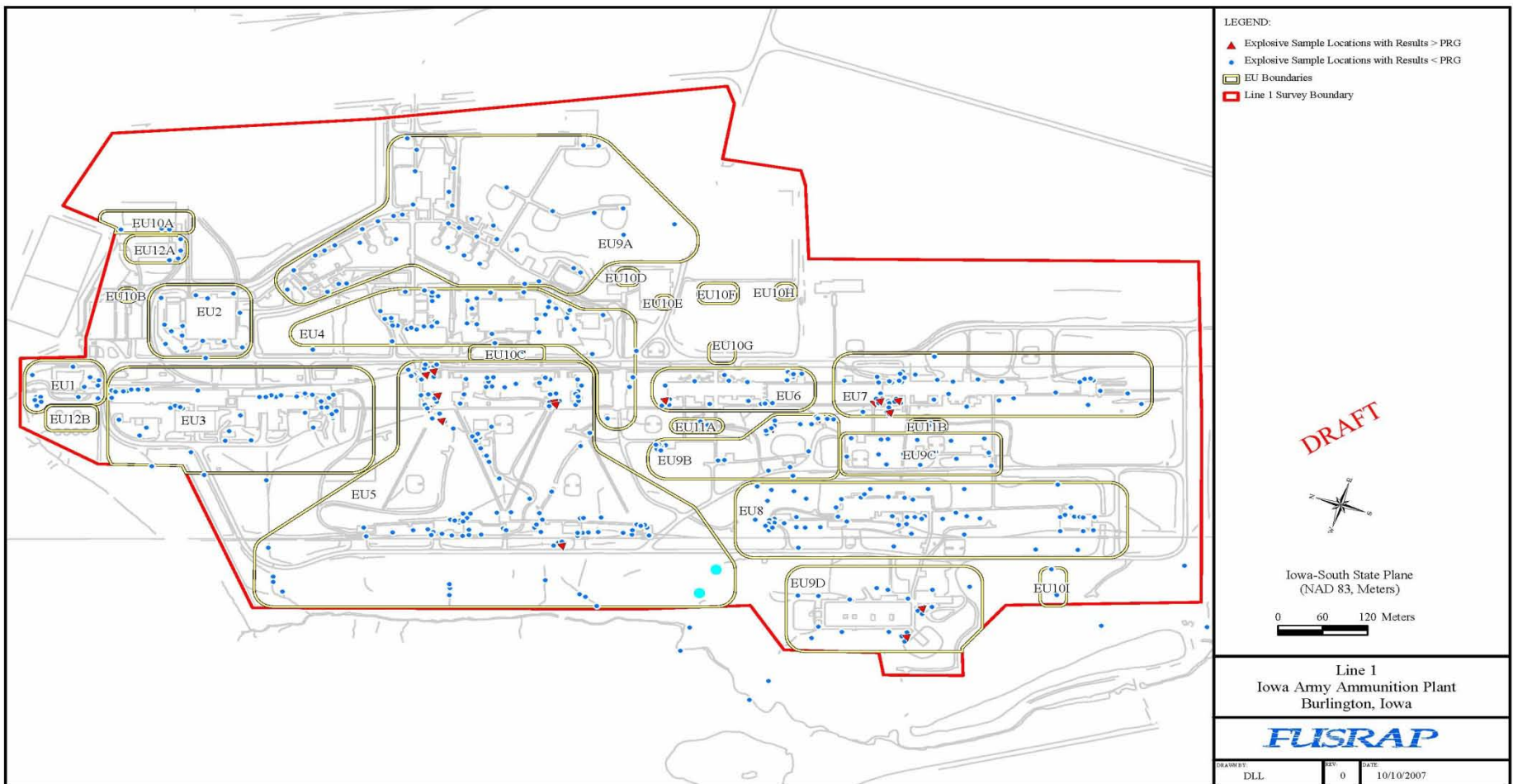


US Army  
Corps of Engineers  
St. Louis District

# Line 1 Explosives



Gateway to Excellence



IAAAP Line 1 Explosive Sample Locations

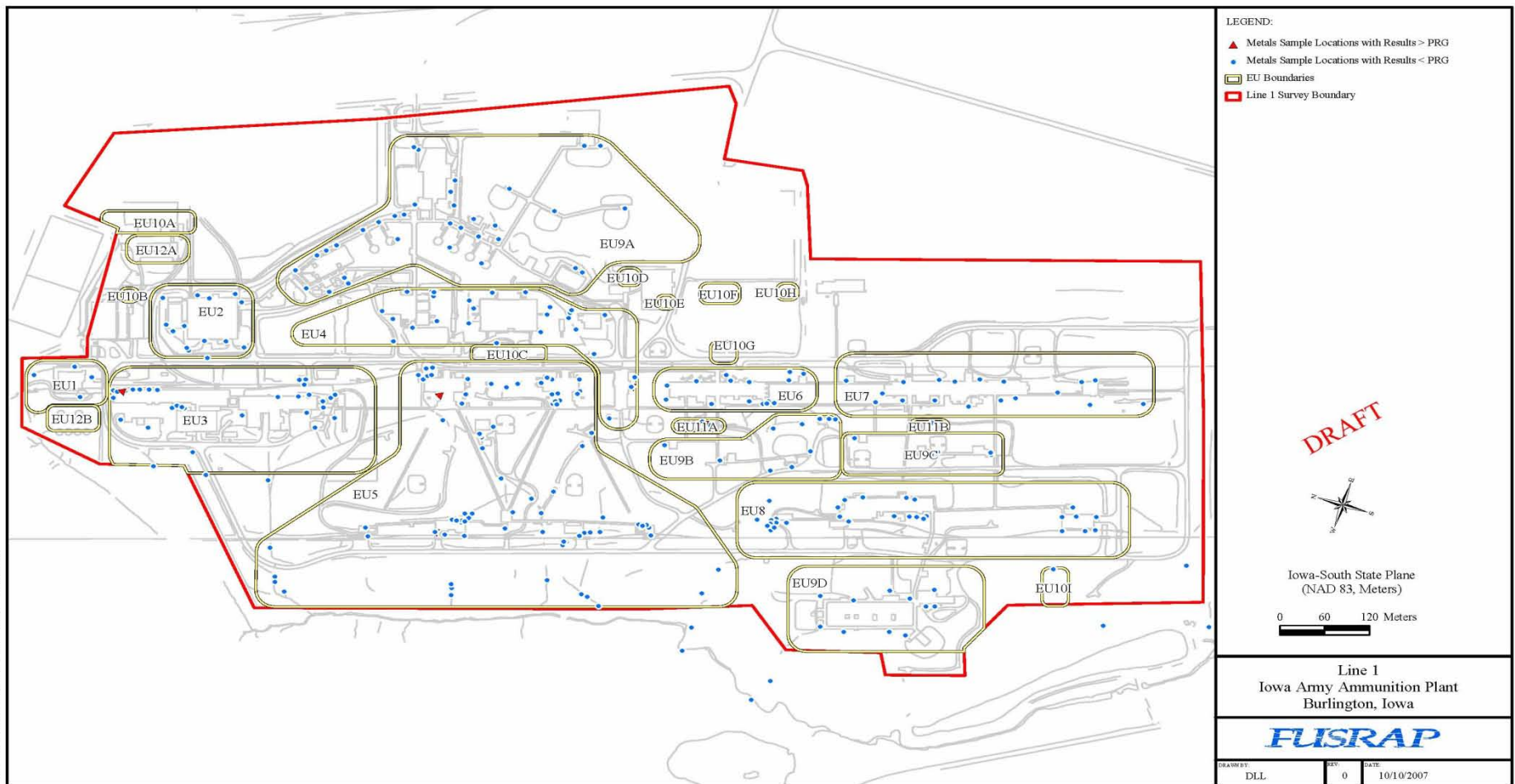


US Army  
Corps of Engineers  
St. Louis District

# Line 1 Metals



Gateway to Excellence



IAAAP Line 1 Metals Sample Locations



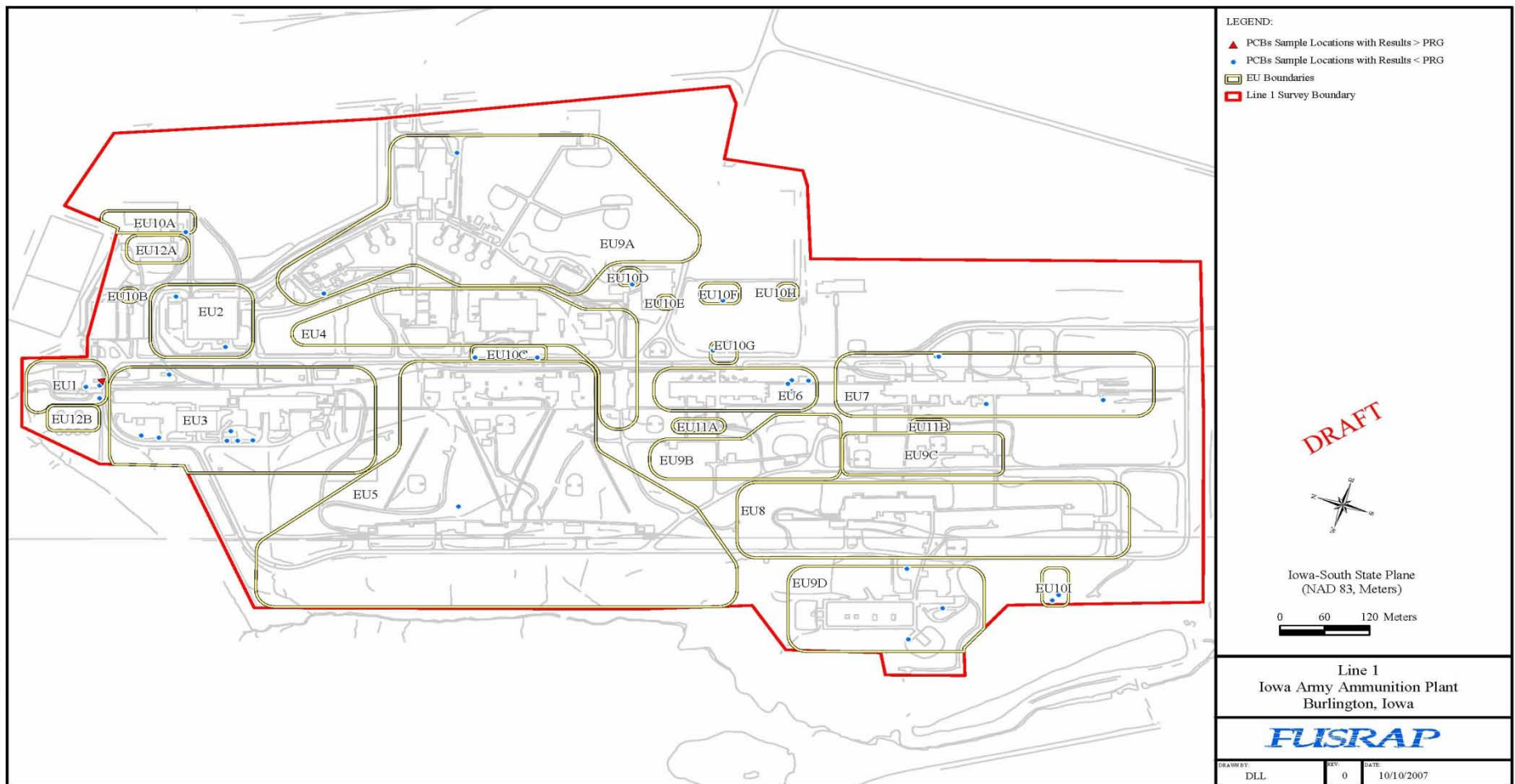


US Army  
Corps of Engineers  
St. Louis District

# Line 1 PCBs



Gateway to Excellence



IAAAP Line 1 PCBs Sample Locations

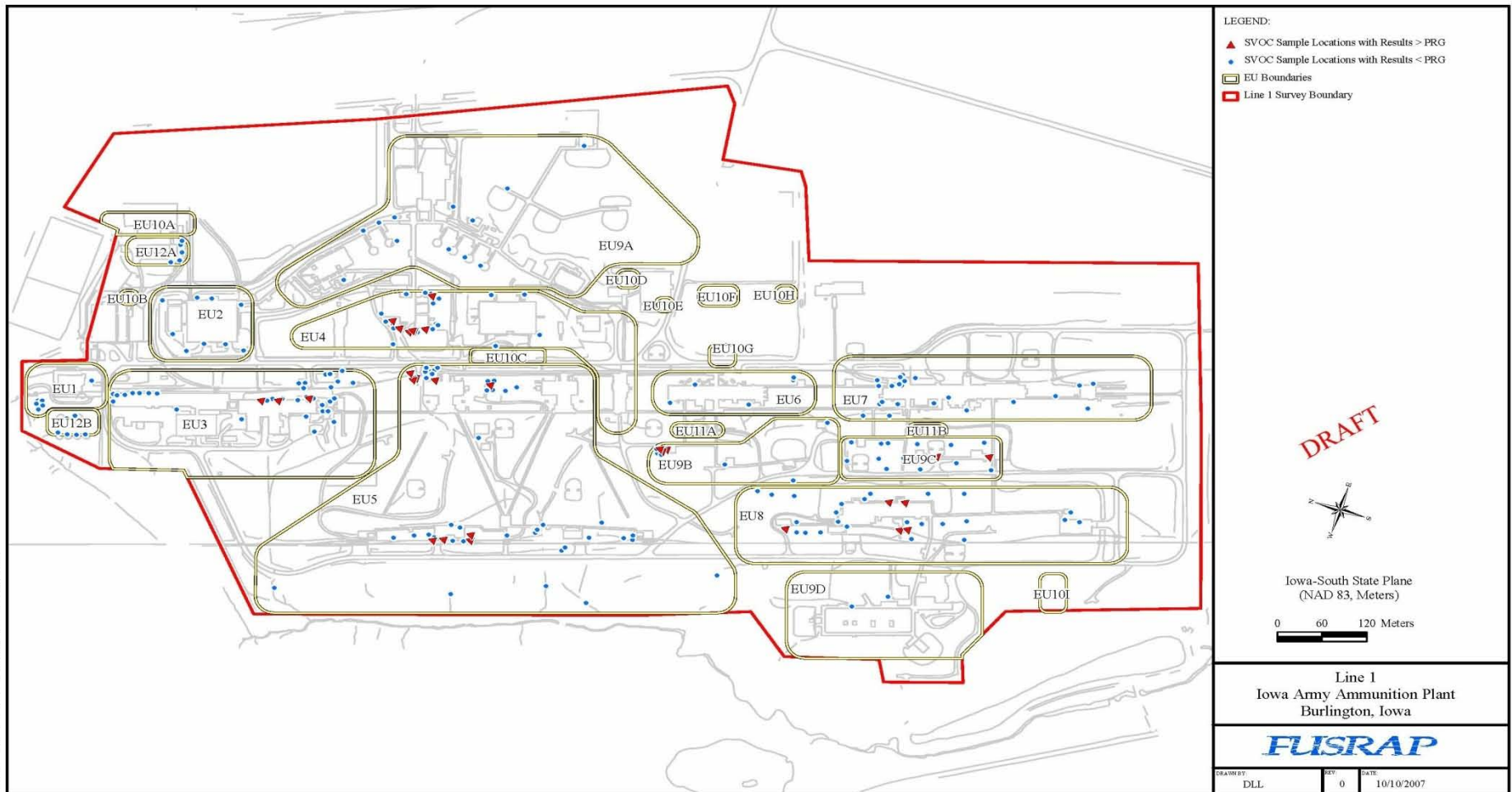


US Army  
Corps of Engineers  
St. Louis District

# Line 1 SVOCs



Gateway to Excellence



IAAAP Line 1 SVOCs Sample Locations



US Army  
Corps of Engineers  
St. Louis District

# FUSRAP Progress Report



Gateway to Excellence

## Work Planned for Next Three Months

- Take additional samples at WBPS, Line 1, and Firing Site to clarify.
- Remedial Investigation Report Draft out for review
- Line 1/WBPS Remedial Design Draft out for review



**US Army**  
**Corps of Engineers**  
St. Louis District

# FUSRAP Funding



Gateway to Excellence

---

## **FY 08 Funding - \$400K currently (A/E)**

- **PM seeking additional funds for FY08 for removal action on WBPS & Line 1**
- **Need agreement with Army re IDA**





US Army  
Corps of Engineers  
St. Louis District

# FFA Requirements



Gateway to Excellence

- **Status:**
  - Seeking extension of due date to DEC07 for RI report due to volume of data and complexity of line 1
  - Exploring the removal actions on WBPS and Line 1; addressed by RA WP
  - Report would not include removal action documents



US Army  
Corps of Engineers  
St. Louis District

# Questions



Gateway to Excellence

Questions? Questions? Questions?

Questions? Questions?

Questions? Questions?

Questions? Questions?

Questions? Questions?

Questions? Questions?

Questions? Questions?